



Telemedicine Cart Solution

TELEMEDICINE CART SOLUTION

The Avalue Telemedicine Cart Solution integrates a full solution in a Medical All In One PC. It features high quality PTZ Camera and audio communication to help to provide a cost effective solution which can assist with remote care and diagnosis in a clinical setting.

Benefits

The operational efficiencies come from the redistribution of clinical skills across buildings, facilities and networks



Reduce contact
infection



Improve work
efficiency



Enhance patient's
experience



Applications



Tele-ICU/ Isolation Room



Rural Healthcare Outreach



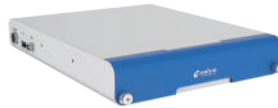
Tele-Rehabilitation

Medical Mobile Cart



* System configurable TDP-down to optimize power and performance for better battery runtime.

Expansion Power Bank



Slim & Light Weight



Rechargeable Battery



Hot Swappable



12V / 19V Output



VESA Mount



Management Tool

PTZ Camera



30X Optical Zoom



One-Button Snapshot



Handheld Camera Head



IR for Night View



One-Click Pan-Tilt



Medical Certifications



HID-2334 23.8" Ultra Light Medical Cart Panel PC

- 23.8" Full HD PCAP Multi touch
- 7th Gen Intel Core i5 Processor
- LED reading light bar
- Optional Barcode Scanner
- Optional Built-in Privacy Screen
- Optional 2 x 6900mAh Hot swappable batteries
- Optional 4 Slots Charging Bay
- IP65 Front Panel Protection



HID-2138 21.5" Tiger Lake Medical Panel PC

- 21.5" FHD Display with PCAP Multi-Touch
- Intel 11th gen Tiger Lake U Core Processor
- Front Panel IP65
- Fanless Design
- Ultra-Slim Design
- Optional NFC
- Optional Webcam
- Optional Handset