

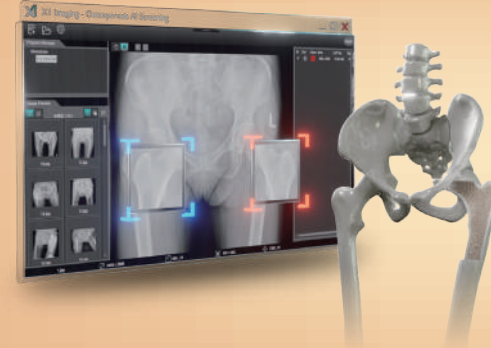
AI Diagnosis Solution

Screening for prevention, early detection and treatment



Cervical Cancer AI Screening Assistant

Cervical Cancer AI Screening Assistant can assist clinical medical laboratory scientists to more accurately screen out specimens with abnormal lesions and reduce the false negative rate of manual reading slides.

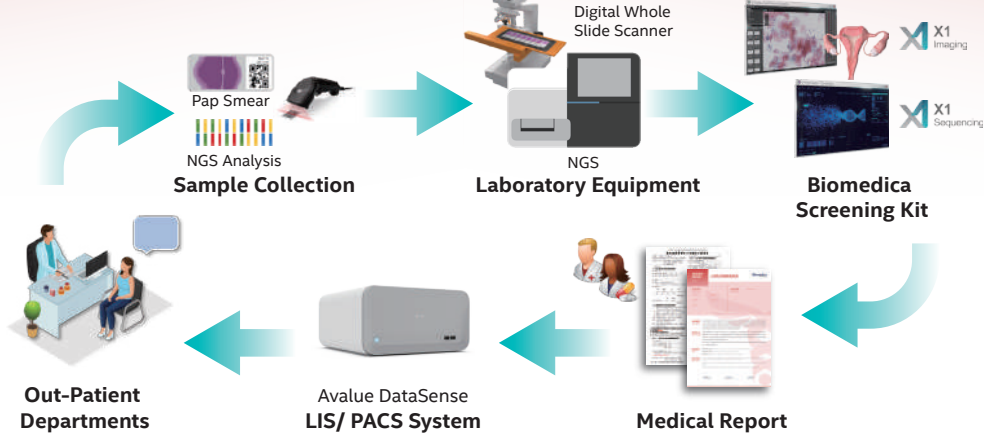


Osteoporosis AI Screening Assistant

Osteoporosis AI Screening Assistant can be used in clinics and health check-up centers to provide fast and accurate osteoporosis screening and can also assist medical institutions in entering rural areas and communities to actively provide people with osteoporosis screening services and prevention the potential risks.

Pathology & NGS

AI-Assisted Screening Kit



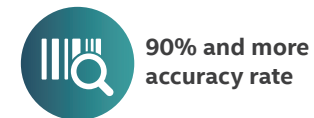
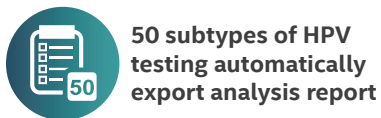
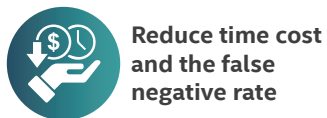
Orthopedic Out-patients

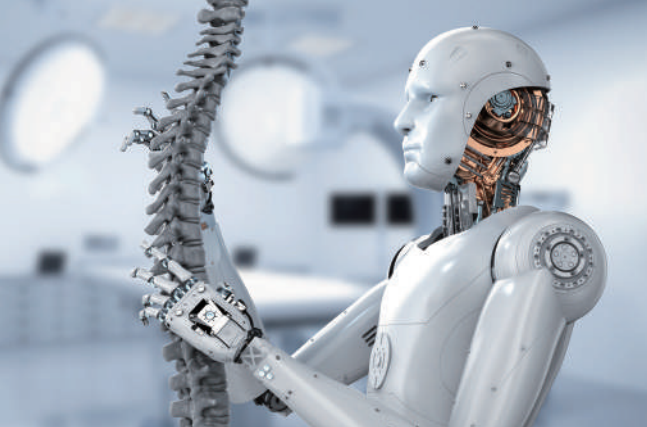


Radiology



Take an X-ray to confirm whether there is a fracture





AI Diagnosis Solution

Screening for prevention, early detection and treatment



HPS-621D4A High Performance Computing

Dual 2nd Gen. Intel® Xeon® Scalable Processors workstation

- 19" 4U Chassis
- 3 x Front Accessible 2.5" storage bay
- Dual Intel FCLGA3647 Sockets, Intel C621 chipset
- 12 x DDR4 supports up to 1.5TB
- IPMI 2.0 with AST 2500 BMC controller onboard
- 4 x Intel I210AT Giga-bit Ethernet



Time-to-solutions



IPMI 2.0 Supported



Extended Lifecycle



IPX1 on Top and front side



UL-60601 Medical Certificate Ready



Secure and Reliable

MAB-T600 AI Box for Medical Solution

Support 12th Gen Intel® Core™ Processor Medical Certificate Ready

- Support 12th Gen Intel® Core™ Processor w/ R680E Chipset
- 2 x DDR5 SO-DIMM 4800MHz, Up to 64GB
- 4 x Expansion Slots, PCIe x 16 Gen 5, M.2 Key B/E/M, Supports 10.5" Mainstream GPU card
- Optimized Air Flow and Acoustic Design
- IPX1 Grade Protection
- Medical Certification Ready (UL-60601)

